

EcoStruxure™ IT for Partners

Gain new visibility into a customer's physical IT layer via APC's cloud-based vendor agnostic software solution.

Why EcoStruxure™ IT?

Make IT infrastructure more **reliable & efficient** while simplifying monitoring by offering complete visibility, alerting & analytics tools for **end customers with environments** that have qualities such as:

- Distributed IT i.e. local edge & branch locations
- Hybrid IT
- Connected devices that speak SNMP or Modbus TCP

Value to Your Customer

EcoStruxure™ IT allows you to **assess and monitor** your customer's existing IT environment and give them recommendations on:

- How to decrease utility costs by **right-sizing power & cooling configurations**
- How your customer **compares** with other companies with similar IT environments
- How to **proactively** handle issues and incidents and **avoid downtime** & interruptions

Offer your customers the ability to monitor and give insight into their environment through:



EcoStruxure™ IT Expert

Assess

- Health status across the global environment
- Identify IT Refresh and Upsell Opportunities
- Insight into where to best spend their next IT dollars

Monitor & Manage

- Multi-tenancy centralized monitoring of your customer's existing equipment
- Access the dashboard from any device
- Provide data-driven, actionable insights
- Real-time device alarms & alarm consolidation

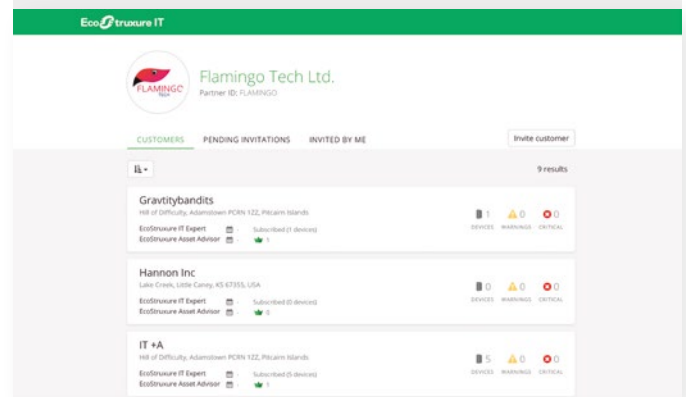
How to Access EcoStruxure™ IT

Connect through the **EcoStruxure™ IT Gateway**

EcoStruxure™ IT cloud based software allows you to **invite new and existing customers to the EcoStruxure™ IT Gateway**, giving you visibility into their inventory of physical infrastructure products that communicate via SNMP or Modbus TCP.

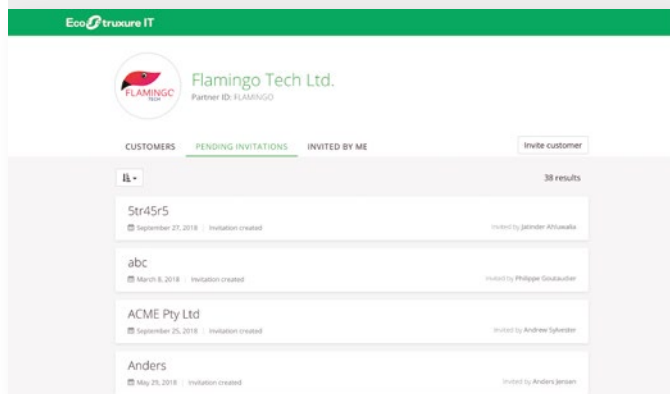
1

Connect to the **EcoStruxure™ IT for Partners*** via <https://ecostruxureit.com/for-partners/>



2

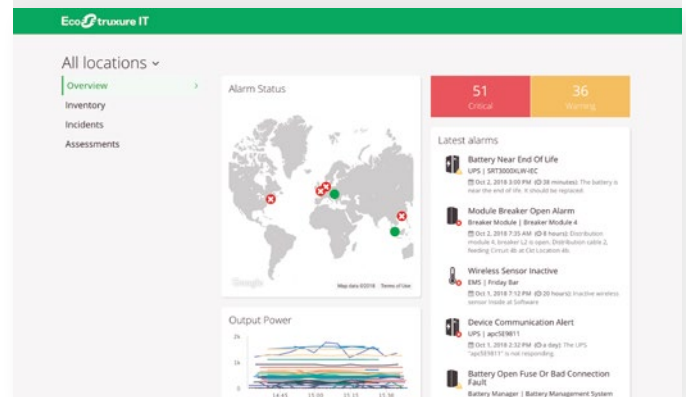
Once signed into the EcoStruxure™ IT for Partners dashboard, invite your customers to connect to the **EcoStruxure™ IT Gateway**



To guarantee a smooth connection, contact your APC Channel Manager or [click here](#) for the **Gateway System Requirements**

3

After your customers are connected to the Gateway, you can monitor their infrastructure via **EcoStruxure™ IT Expert**, gaining insight elements such as on-phase balancing, humidity, and more.



In addition to having visibility into your customers network, you can begin running any of the following **assessments on their physical infrastructure**:

- UPS Health Check
- Lifetime Alarms
- Cooling Optimization (Coming soon!)

Sign up for a **free demonstration & 30-day trial** of EcoStruxure™ IT Expert

Get Started Today